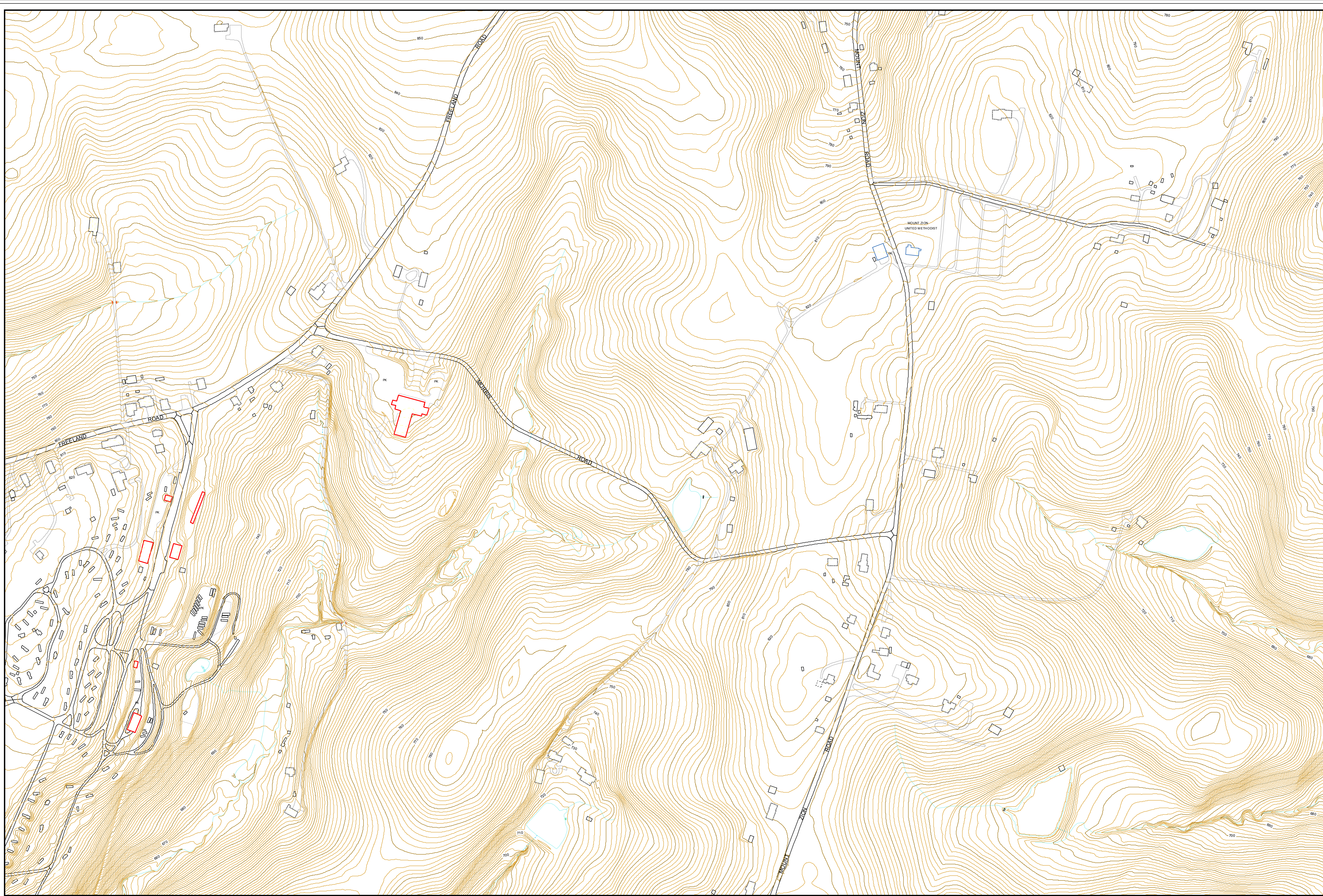


Baltimore County Maryland

Tile Id: 006C2

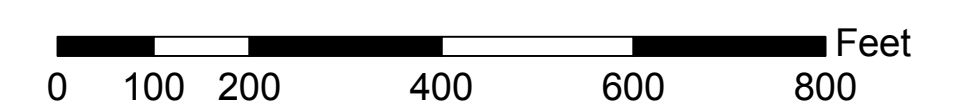


Legend

- | | |
|--|-------------------------------|
| — Index Contour | — RESERVOIR |
| — Intermediate Contour | — SINGLE LINE STREAM |
| — Index Depression Contour | — STORM WATER RETENTION POND |
| — Intermediate Depression Contour | — WETLAND, SWAMP |
| — Obscured Index Contour | □ DRIVEWAY |
| — Obscured Intermediate Contour | □ OVERPASS |
| — Obscured Index Depression Contour | □ PARKING |
| — Obscured Intermediate Depression Contour | □ PAVED ALLEY |
| — Hidden Contour | □ PAVED ROAD |
| — Railroad | □ PEDESTRIAN BRIDGE |
| — Metro | □ ROAD UNDER CONSTRUCTION |
| — Light Rail | □ RUNWAY, TAXIWAY |
| — BAY SHORELINE | □ TUNNEL, PORTAL |
| — BOAT RAMP, DOCK | □ UNPAVED ROAD |
| — BULKEAD | □ BUILDING UNDER CONSTRUCTION |
| — CULVERT | □ COMMERCIAL BUILDING |
| — DAM | □ GARAGE |
| — DOUBLE LINE STREAM/RIVER | □ INSTITUTIONAL BUILDING |
| — DRAINAGE CONNECTOR | □ MISCELLANEOUS STRUCTURE |
| — FLOODWALL | □ RESIDENTIAL BUILDING |
| — HIDDEN HYDROLOGY | □ SILO |
| — INTERMITTENT STREAM | □ STORAGE TANK |
| — LAKE, POND | □ WATER TOWER |
| — PIER | □ BRIDGE |

Map Notes:
Map compiled using
photogrammetric
methods from 1" = 200'
aerial photography
Contours From 2005
Buildings, Roads and
Hydrology from 2008.
All other layers from
1995, 1996, 1997

Projection:
Maryland State Plane
Zone ID 1900
NAD 83 US SURVEY FEET



1 inch = 200 feet
Contour Interval: 2'