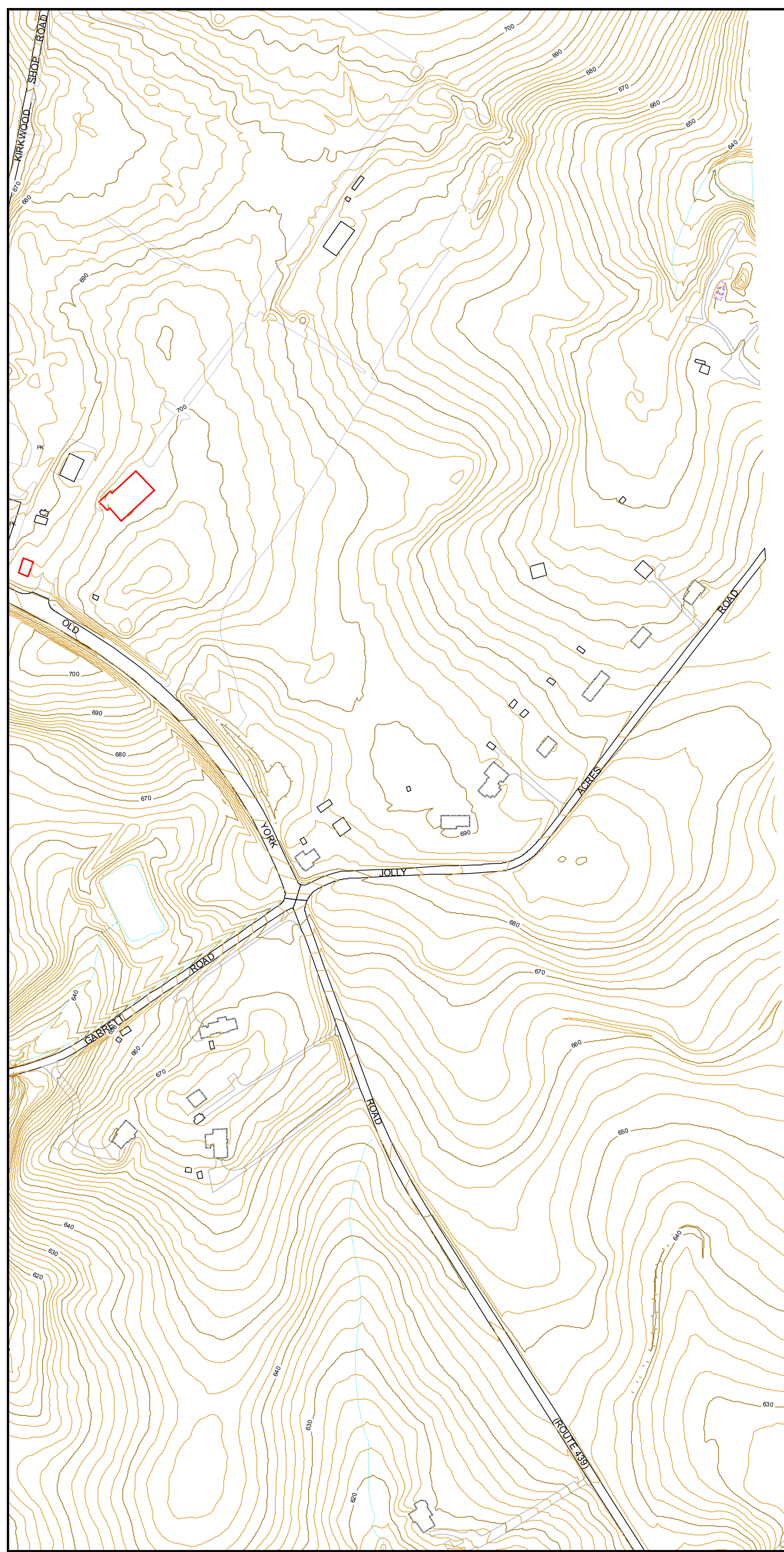


# Baltimore County Maryland

Tile Id: 013C2

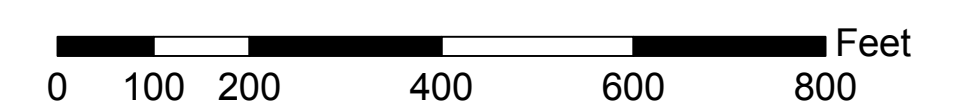


## Legend

- |  |                               |
|--|-------------------------------|
| — Index Contour                            | — RESERVOIR                   |
| — Intermediate Contour                     | — SINGLE LINE STREAM          |
| — Index Depression Contour                 | — STORM WATER RETENTION POND  |
| — Intermediate Depression Contour          | — WETLAND, SWAMP              |
| — Obscured Index Contour                   | □ DRIVEWAY                    |
| — Obscured Intermediate Contour            | □ OVERPASS                    |
| — Obscured Index Depression Contour        | □ PARKING                     |
| — Obscured Intermediate Depression Contour | □ PAVED ALLEY                 |
| — Hidden Contour                           | □ PAVED ROAD                  |
| — Railroad                                 | □ PEDESTRIAN BRIDGE           |
| — Metro                                    | □ ROAD UNDER CONSTRUCTION     |
| — Light Rail                               | □ RUNWAY, TAXIWAY             |
| — BAY SHORELINE                            | □ TUNNEL, PORTAL              |
| — BOAT RAMP, DOCK                          | □ UNPAVED ROAD                |
| — BULKHEAD                                 | □ BUILDING UNDER CONSTRUCTION |
| — CULVERT                                  | □ COMMERCIAL BUILDING         |
| — DAM                                      | □ GARAGE                      |
| — DOUBLE LINE STREAM/RIVER                 | □ INSTITUTIONAL BUILDING      |
| — DRAINAGE CONNECTOR                       | □ MISCELLANEOUS STRUCTURE     |
| — FLOODWALL                                | □ RESIDENTIAL BUILDING        |
| — HIDDEN HYDROLOGY                         | □ SILO                        |
| — INTERMITTENT STREAM                      | □ STORAGE TANK                |
| — LAKE, POND                               | □ WATER TOWER                 |
| — PIER                                     | □ BRIDGE                      |

Map Notes:  
Map compiled using  
photogrammetric  
methods from 1" = 200'  
aerial photography  
Contours From 2005  
Buildings, Roads and  
Hydrology from 2008.  
All other layers from  
1995, 1996, 1997

Projection:  
Maryland State Plane  
Zone ID 1900  
NAD 83 US SURVEY FEET



1 inch = 200 feet  
Contour Interval: 2'