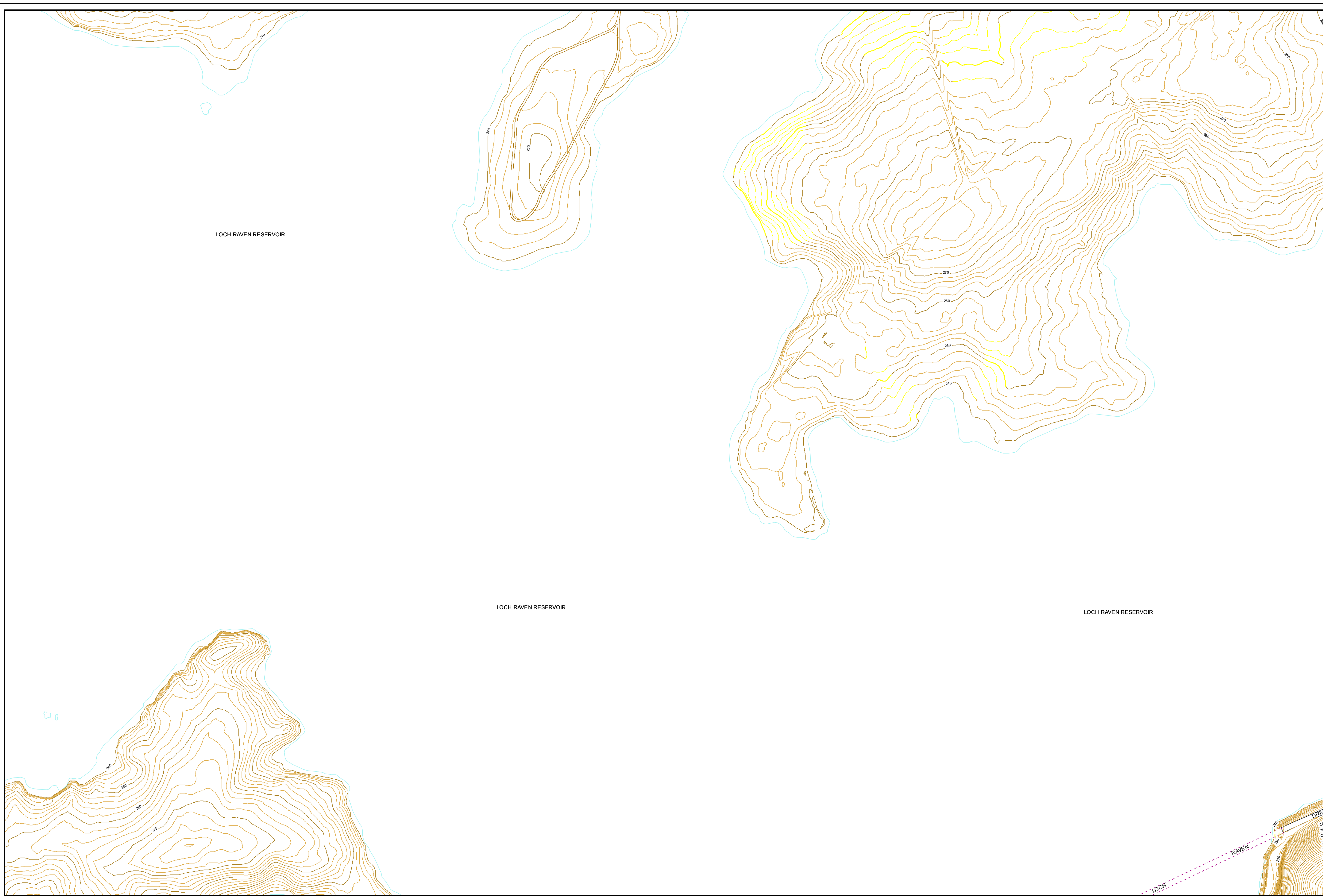


Baltimore County Maryland

Tile Id: 052C3

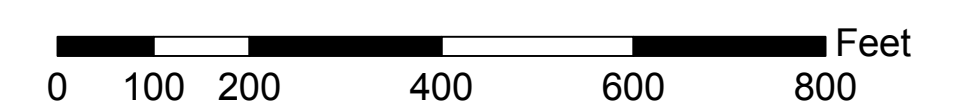


Legend

Index Contour	RESERVOIR
Intermediate Contour	SINGLE LINE STREAM
Index Depression Contour	STORM WATER RETENTION POND
Intermediate Depression Contour	WETLAND, SWAMP
Obscured Index Contour	DRIVEWAY
Obscured Intermediate Contour	OVERPASS
Obscured Index Depression Contour	PARKING
Obscured Intermediate Depression Contour	PAVED ALLEY
Hidden Contour	PAVED ROAD
Railroad	PEDESTRIAN BRIDGE
Metro	ROAD UNDER CONSTRUCTION
Light Rail	RUNWAY, TAXIWAY
BAY SHORELINE	TUNNEL, PORTAL
BOAT RAMP, DOCK	UNPAVED ROAD
BULKHEAD	BUILDING UNDER CONSTRUCTION
CULVERT	COMMERCIAL BUILDING
DAM	GARAGE
DOUBLE LINE STREAM/RIVER	INSTITUTIONAL BUILDING
DRAINAGE CONNECTOR	MISCELLANEOUS STRUCTURE
FLOODWALL	RESIDENTIAL BUILDING
HIDDEN HYDROLOGY	SILO
INTERMITTENT STREAM	STORAGE TANK
LAKE, POND	WATER TOWER
PIER	BRIDGE

Map Notes:
Map compiled using
photogrammetric
methods from 1" = 200'
aerial photography
Contours From 2005
Buildings, Roads and
Hydrology from 2008.
All other layers from
1995, 1996, 1997

Projection:
Maryland State Plane
Zone ID 1900
NAD 83 US SURVEY FEET



1 inch = 200 feet
Contour Interval: 2'