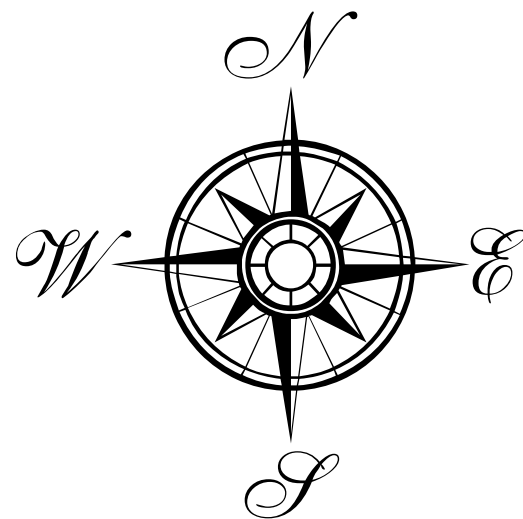
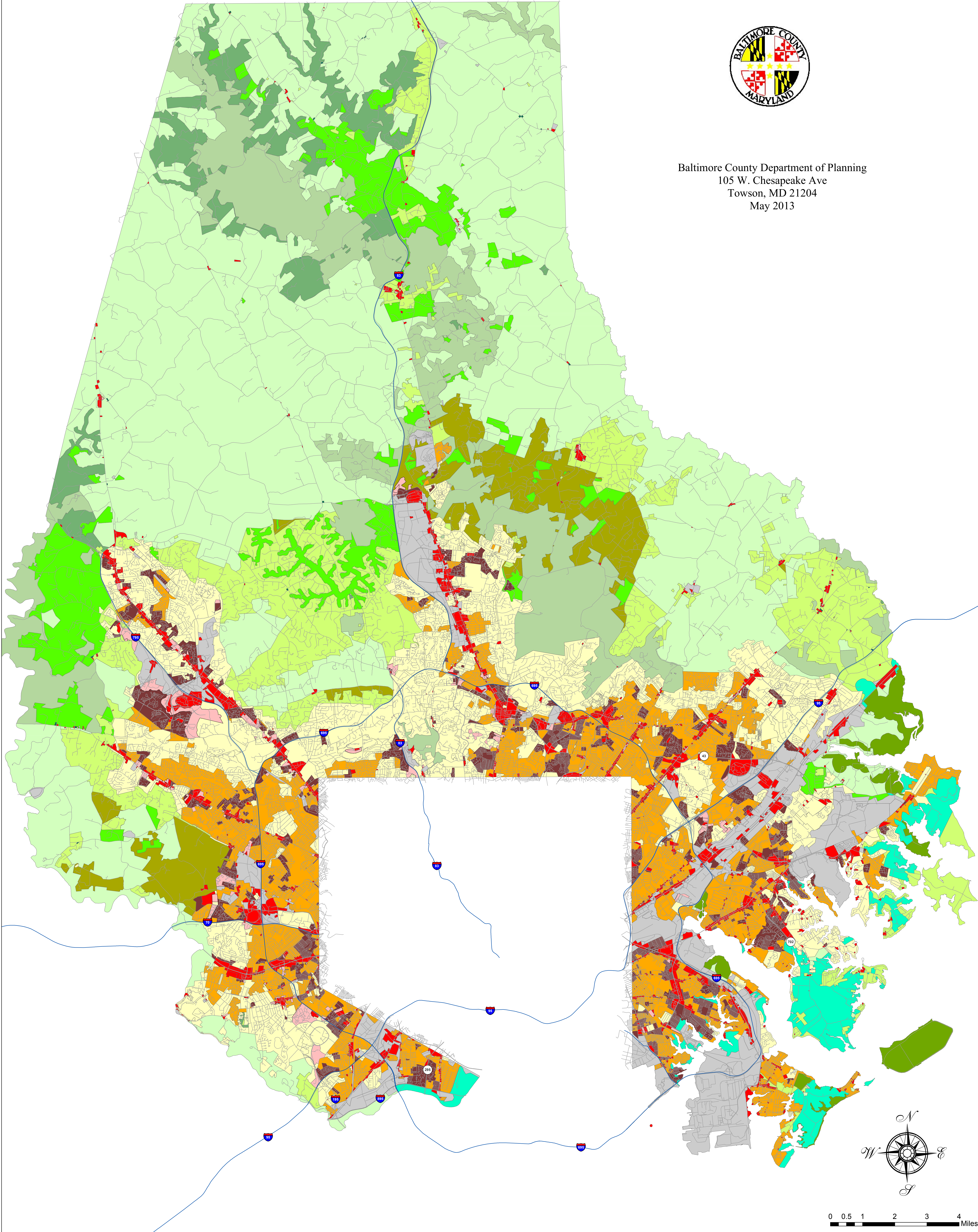


Baltimore County Zoning Map



Baltimore County Department of Planning
105 W. Chesapeake Ave
Towson, MD 21204
May 2013



0 0.5 1 2 3 4 Miles

Legend

DENSITY RESIDENTIAL

- DR 1 - 1 Density unit per acre
- DR 2 - 2 Density unit per acre
- DR 3.5 - 3.5 Density unit per acre
- DR 5.5 - 5.5 Density unit per acre
- DR 10.5 - 10.5 Density unit per acre
- DR 16 - 16 Density unit per acre
- RAE 1 - Residence Apartment, Elevator, Midrise - 40 density units per acre
- RAE 2 - Residence Apartment, Elevator - High Rise, 80 density units per acre

OFFICE

- SE - Service Employment
- OT - Office and Technology
- OR 1 - Office Building; Residential
- OR 2 - Office Building; Residential
- O 3 - Office Park
- RO - Residential - Office 5.5 density units per acre
- ROA - Residential - Office Class A Office

MANUFACTURING AND BUSINESS

- MR - Manufacturing Restricted
- MLR - Manufacturing Light Restricted
- ML - Manufacturing Light
- MH - Manufacturing Heavy
- BL - Business Local
- BLR - Business Local Restricted
- BM - Business Major
- BR - Business Roadside
- BMB - Business Major Boatyard
- BMM - Business Major Marina
- BMYC - Business Major Yacht Club
- CB - Community Business

RESOURCE CONSERVATION

- RC 2 - Agricultural Protection Generally 1 lot per 50 acres, 1 acre lot minimum
- RC 3 - Deferral of Planning and Development - 0.3 Density, 1 acre lot minimum
- RC 4 - Watershed Protection 0.2 Density, 3 acre lot minimum or cluster
- RC 5 - Rural Residential 0.667 Density, 1 acre lot minimum
- RC 6 - Rural Conservation and Residential, 0.2 lot per acre of density calculation area
- RC 7 - Resource Preservation, 0.04 lot per acre of gross tract area, Tracts less than 50 acres cannot be subdivided.
- RC 8 - Environmental Enhancement Zone
- RC 20 - Resource Conservation, Critical Area, 1 lot per acre
- RC 50 - Resource Conservation, Critical Area Agricultural 1 lot per 20 acres (20 - 100 acres) 1 lot per 50 acres (100+ acres)
- RCC - Resource Conservation, Commercial

DATA SOURCES:

Zoning: Baltimore County Department of Planning (1:2400) 2013
Roads: Baltimore Metropolitan Council (1:24000) 2000

DISTRICTS

- AS - Automotive Service
- CR - Commercial Rural
- CCC - Commercial, Community Core
- CT - Commercial, Town-Center Core
- IM - Industrial Major
- H and H1 - Honeygo Overlay District
- M43 - Maryland Route 43 Overlay District
- NC - Neighborhood Commons
- ME - Mercantile Exposition

Note:
The zoning depicted in this application incorporates the actions associated with 2012 Comprehensive Zoning Map Process, zoning changes associated with an adopted Community Plan and Baltimore County Board of Appeals actions through January 2013.