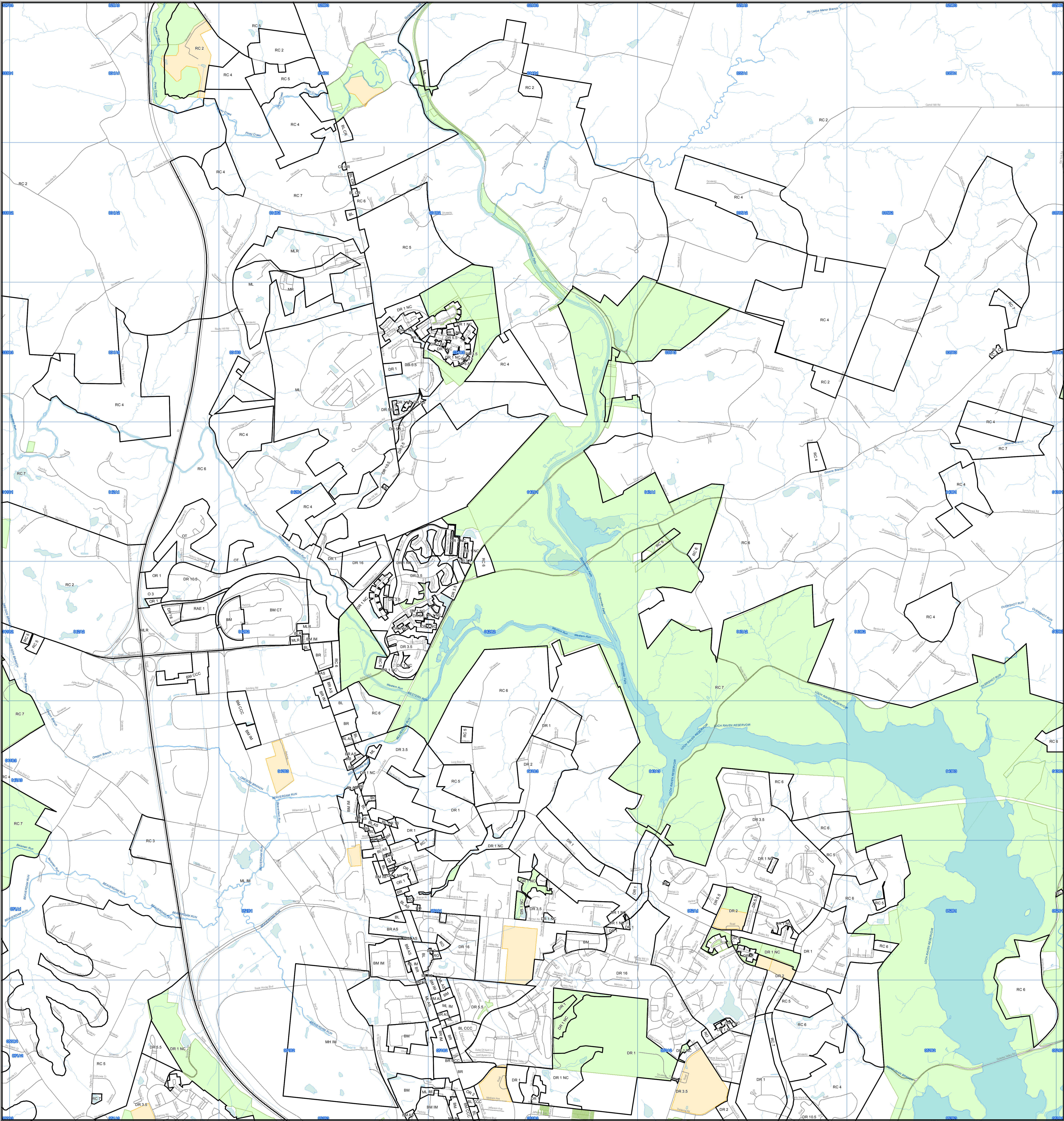


# BALTIMORE COUNTY

## 1000 Scale Zoning Maps

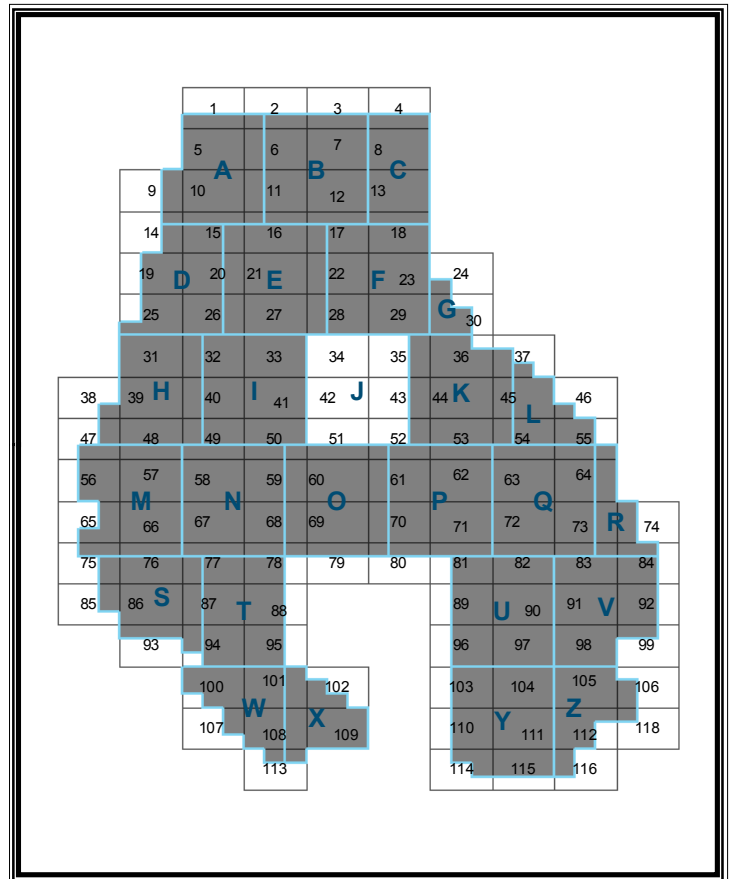


**Legend**

- Zoning
- Railroad
- Roads
- 200' Scale Grid
- Hydrology

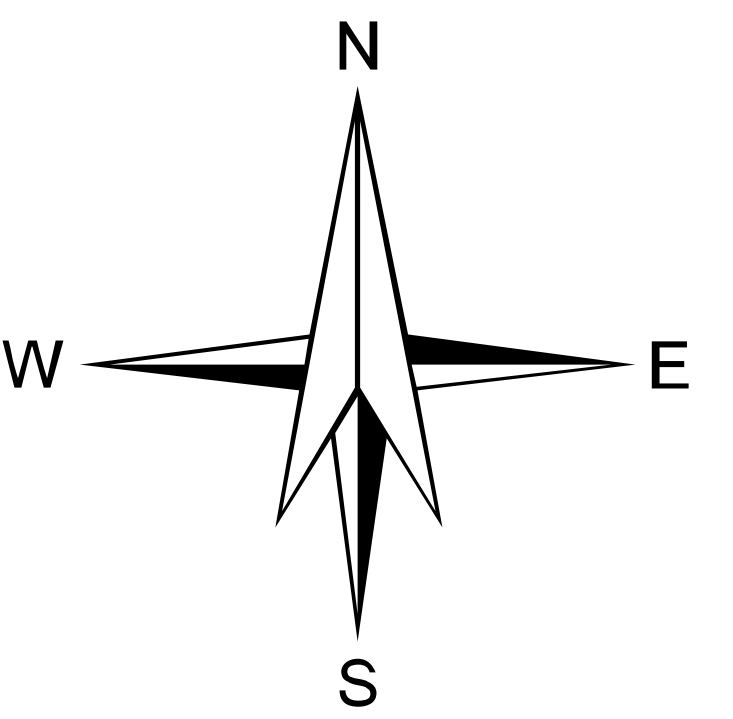
**Land Use**

- Recreation and Parks
- Board of Education
- Military

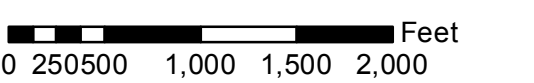


Area of Interest

**J**



Scale: 1:12000  
1" = 1000'



**DISCLAIMER:**

The zoning depicted in this map incorporates the actions associated with 2020 Comprehensive Zoning Map Process and zoning changes associated with Baltimore County Board of Appeals actions through October 30, 2020.

Data Sources:  
Planimetric Data - Baltimore County  
OT/IGS Services Unit  
1:2400, from 2017 Photography  
Zoning - Baltimore County Department of Planning  
1:2400, 2020

Prepared By:  
Baltimore County Department of Planning  
www.baltimorecountymd.gov/planning  
November, 2020